

CERTIFIED LAND CORNER RECORDATION

DESCRIPTION OF CORNER EVIDENCE FOUND, AND ORIGINAL RECORD (if known)

1/4 27 | 26
 T.13 N.,
 R.68 W.,
 6th P.M.

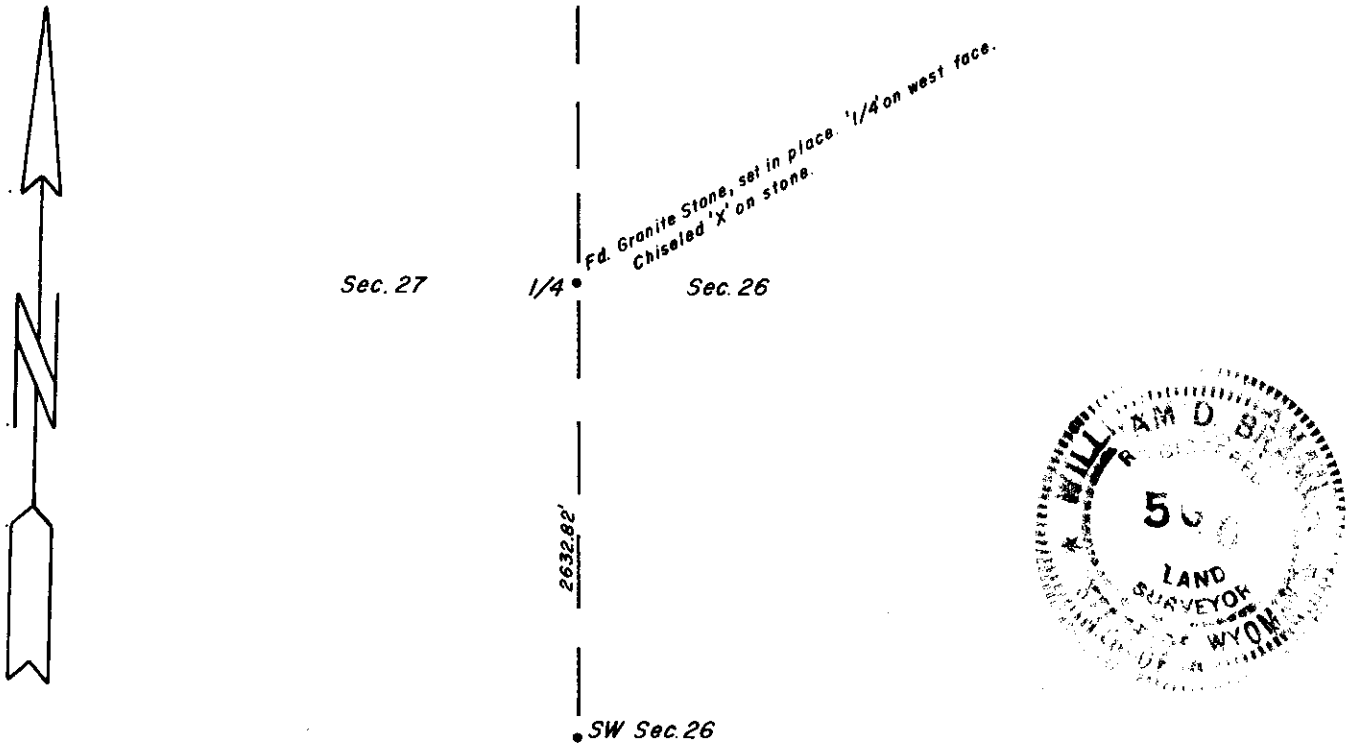
Found granite stone, set in place. 1/4 on west face.
 Falls in open prairie, with small basin lying northwesterly
 approximately 120'.

DESCRIPTION OF MONUMENT AND ACCESSORIES ESTABLISHED
 TO PERPETUATE THE ORIGINAL LOCATION OF THIS CORNER:

Hub and tack set 660' north of stone on extension of line
 along west side of south 1/2, Section 26.

Set stake and lath alongside stone.

SKETCH, WITH COURSE AND DISTANCE TO ADJACENT CORNER IF DETERMINED IN THIS SURVEY.
 (May Sketch or Paste Reproduction on Reverse Side.)



I, William D. Braman certify that I have carefully performed or reviewed the work done on the diagrammed corner as reported on this recordation form and approve the same.

William D. Braman Wyo. LS 566
 Signature of Surveyor Registration No.

STATE OF WYOMING,
 Office of Clerk and Recorder,
 County of Taramie

This "corner record" was filed for record on the 8 day of July, 1977, was noted on the cross-index plat and is assigned page No. _____, in book No. _____.

Just C. Withead
 County Official

Cross Index No.	T. _____	R. _____	Mer.
	<u>T-17</u>	<u>13</u>	<u>68</u> Mer.
	_____	_____	Mer.
	_____	_____	Mer.
	_____	_____	Mer.
	_____	_____	Mer.
	_____	_____	Mer.

445674

Photographed _____
Indexed _____
Filed _____
Assessor _____